

Space for company and solitude

MIHALY SLOCOMBE



A rear extension to a worker's cottage in inner-suburban Melbourne is a love letter to the Australian outdoors, recreating the feeling of camping in the bush.

Words by Emma-Kate Wilson
Photography by Tatjana Plitt

Designed for a family who loves camping, Weather House by Mihaly Slocombe is responsive to the external environment, all while inviting the outside into the interior palette with tactile and durable materials.

"Our clients love the location and being in the inner suburbs of Melbourne, but they wanted to create something that was an oasis and experience that felt like that break they get when they go for a camping trip; a revival of spirit," says Mihaly Slocombe principal architect Erica Slocombe.

A series of tools ensures this connection – blues, greens, and natural timber are paired with floor-to-ceiling windows and doors that entirely open the home to the Australian native garden carefully crafted by Ben Saunders Landscapes.

In the kitchen, a large awning window connects to the external courtyard, swinging open to offer a servery bar for outdoor cooking, dining and entertaining. A marble countertop adds tactility, while blackbutt cabinetry is trimmed in a green-blue eucalyptus hue that is evocative of looking up at trees in a remote campsite.

Generous space between benches, cabinetry that reaches up to the ceiling, and a full laundry and pantry make the most of the kitchen's small footprint. "It gives additional amenities by having space for things that are not everyday use, so you don't feel cluttered," Erica says.

Multi-dimensional and sustainably sourced Australian blackbutt features as a reoccurring motif; the wood was chosen for its water- and fire-resistant qualities. It is a warm, organic complement to the crisp natural stone and colourful pops of paint. Solid timber is used across the ceiling in the living area and carried through to the cabinetry across the home.

In the bathroom, the shower's blackbutt batten floor can be lifted to reveal a sunken tub with views out to the surrounding foliage. The glass doors fold back to reveal the natural surrounds, creating a spa-like feel in this private space. Brass tapware adds to the luxury, as do peachy-pink terrazzo floor tiles and soft pink walls.

Consistent with the rest of the house, the bathroom maximizes its limited space: the compact blackbutt vanity doesn't distract from the clean, minimal lines, instead hiding storage under the stairs for inner-suburban compact living – and leaving plenty of space to invite the outside in. ©

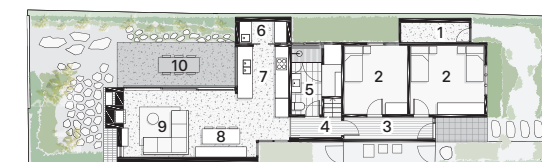
01 New living spaces encourage direct engagement between indoor and outdoor activities.

02 An awning window swings open to the courtyard, enabling the kitchen to double as a service hatch.

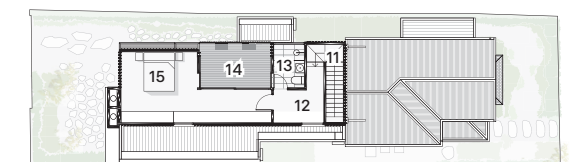
03 Cabinetry tones allude to the colours of native Australian trees. Artwork: Michelle Kettle; vase: Karari and Zigzag.



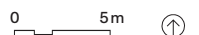
- 1 Shed
- 2 Bedroom
- 3 Hall one
- 4 Hall two
- 5 Bathroom
- 6 Laundry
- 7 Kitchen
- 8 Dining
- 9 Living
- 10 Outdoor dining
- 11 Stairs
- 12 Hall three
- 13 Ensuite
- 14 Deck
- 15 Main bedroom

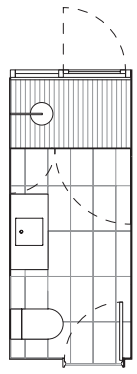


Ground floor 1:400

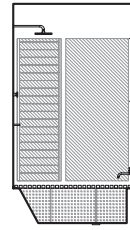


First floor 1:400

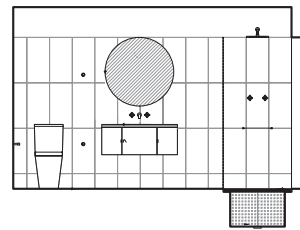
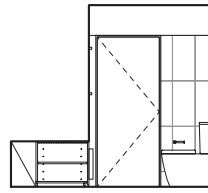




Bathroom plan 1:100 0 2m



Bathroom elevations 1:100



04

Bathroom products

- Internal walls:** Santosa tiles from Classic Ceramics in 'White-64'
- Flooring:** Rossa terrazzo from Cerdomus in 'Pink'
- Joinery:** Blackbutt solid timber benchtop; Ventech blackbutt veneer cupboards and fixed panels
- Lighting:** Astro Kos Round surface-mounted downlight from Enlightened Living in 'Black'; Dioscuri Wall 14 light (mounted to vanity) from Artemide
- Tapware and fittings:** Miky 42 Square sink from Rogerseller in 'White'; Icon tapware from Astra Walker in 'Urban Brass'
- Sanitaryware:** Caroma Forma toilet from Reece in 'White'
- Windows:** Thermalheart frames from Architectural Windows Systems in 'Black'; Thermotech double glazing from Viridian
- Other:** Custom removable solid blackbutt timber shower grate

04 Windows onto a garden courtyard create a spa-like bathing experience.

05 In a nifty move, the shower's timber batten floor can be lifted to reveal a sunken tub.





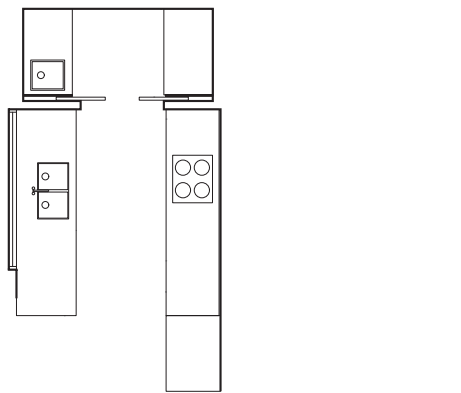
06

Kitchen products

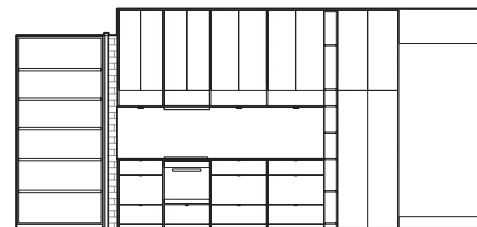
Internal walls: Architectural brick from Melbourne Brick in 'Ivory'
Joinery: Silver Galaxy Dolomite benchtops and splashback from Attila's Natural Stone; Ventech blackbutt veneer cupboards, drawers and open shelves; 2-pac dividers in Dulux 'Falkland'
Lighting: Astro Kos Round surface-mounted downlight from Enlightened Living in 'Black'
Sinks and tapware: Kubus Fraganite double sink from Franke in 'Onyx'; Icon tapware from Astra Walker in 'Urban Brass'
Appliances: Miele induction cooktop, oven, slimline rangehood and semi-integrated dishwasher
Windows: Thermalheart frames from Architectural Windows Systems in 'Black'; Thermotech double glazing from Viridian
Other: Japanese ceramic with parsley via Karari and Ziguzagu



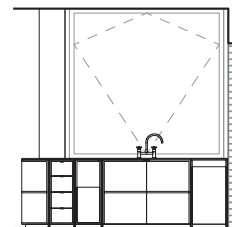
07



Kitchen plan 1:100 0 2m



Kitchen elevations 1:100



06 Tactile, durable materials are a hard-wearing backdrop that can be embellished with precious possessions.

07 Floor-to-ceiling cabinetry adds plentiful storage in a small footprint. Artwork (right): Hoppy Schneider.

Weather House is built on the land of the Wurundjeri Woi-wurrung people of the Kulin nation. **Location** Melbourne, Vic

Architect Mihaly Slocombe +61 3 9080 2238 info@mihalyslocombe.com.au mihalyslocombe.com.au

Project team Warwick Mihaly, Erica Slocombe, Job Gabriels **Builder** Sargent Construction **Engineer** Structure Studio **Joinery** Todays Complete Kitchens **Landscape architect** Ben Saunders Landscapes