

Twice as nice

In Melbourne, a sympathetic extension has delivered on space without sacrificing character.

STORY *Stephen Crafti* | STYLING *Natalie James & Swee Lim*
PHOTOGRAPHY *Nicole England & Tatjana Plitt*

DINING A university's unwanted library catalogue unit, used as a prop on the TV series *The Librarians* (produced by the homeowners, Robyn Butler and Wayne Hope), has been repurposed as wine storage. Rudy the King Charles cavalier, one of two in the family, snoozes in a favourite spot. Dining table and chairs, Angelucci 20th Century. Pendant lights, Luke Furniture. Artwork by Beyula Puntungka Napanangka.

KITCHEN *This page and opposite top* Floor-to-ceiling glass and a skylight above the 7m-long banquette ensures plenty of natural light, plus green views, in the kitchen/dining space. The benchtops and splashback are Elba marble. Smeg stove, Qasair rangehood. Artworks, stylist's own. **FRONT ENTRANCE** New crazy paving is in keeping with the home's Mid-Century character. The path leads to a small courtyard. **PORTRAIT** Robyn and Wayne couldn't be happier with their revamped home.

When Wayne Hope and Robyn Butler bought this modest 1950s cream-brick home, they knew it would need renovating to meet their family's needs. On the upside, it was situated on a reasonably sized block and perfectly located to school for their daughters, Emily, now 17, and Molly, 24.

As luck would have it, the house was also close to the former home of architects Rosa Coy and George Yiontis, founders of Coy Yiontis. "Robyn and I always admired Rosa and George's house," says Wayne. "It had been really cleverly designed to cope with a pretty awkward triangular site." When Robyn and Wayne were ready to renovate, there was no question who they would call.

Wayne and Robyn, both TV scriptwriters/producers, had given the home a light cosmetic update when they first moved in but, thanks to George and Rosa, the abode has now gained a two-storey timber-clad extension, inviting pool and a 6.5x15m ▶

Styling by Sweet Lim. Photography by Tatjana Plitt (this page and opposite top).





LIVING The Eames lounge, from Living Edge, is the perfect spot to relax. Sofa and coffee tables, Jordan. Rug, Loom Rugs. *Tingari Cycle* painting by Walala Tjapaltjarri. The timber-framed work is a Picasso art print. **STAIRS** The couple's art collection adds colour and personality. Artwork by Mitch Vane.



green wall to screen out the apartment block next door.

“The main problem at this property was that a freestanding studio out the back took up a significant amount of the land,” says George. “That said, there was plenty of scope for improvement, inside and out.”

The extension is stitched onto the northern face of the house; expanding sideways rather than backwards meant the couple could have the living space they wanted without consuming the garden. At ground floor, it contains a new entrance, Wayne’s office – a sunny space overlooking the leafy front garden – and the generous open-plan kitchen/dining area, where an oversize glass sliding door can be opened completely for easy flow through to the garden. The main bedroom suite and Robyn’s office are on the first floor.

Wayne and Robyn are keen entertainers, so room for guests to circulate was a key element of the design. The open-plan kitchen/dining space (in the extension) and the living room (in the original home) frame the pool and deck, creating appealing views from every angle. “The long banquette [adjacent to the dining table] is one of the most occupied spots in the house,” says Robyn. “We sometimes work there when we need a break from our offices but it’s fantastic for extra seating when we have people over.”

Next, George and Rosa turned their attention to the cottage, transforming it into a retreat for the girls. Elsewhere, the existing kitchen was demolished to make way for the new entry and access to the living room; the latter is the transition point between Mid-Century and modern. Robyn says she particularly delights in the unimpeded sight lines that allow past and present to be read simultaneously.

Finally, the external areas were completely revamped. A pool and new boundary fence were installed, a barbecue area created, and the gardens relandscaped. The barbecue, neatly concealed in the 6m-long built-in seating that surrounds a Japanese maple, is one of Wayne’s favourite features. “A barbecue in the middle of the back garden isn’t common these days – maybe even a bit bogan – but George and Rosa made it into something beautiful,” he says.

“George and Rosa made every centimetre of this site work for us,” says Robyn. “We still pinch ourselves when we walk around this house. Prior to the renovation, Wayne and I were both working from a small office nook. Now, we have the luxury of our own separate offices as well as more living space. Every detail has been considered to the nth degree.”

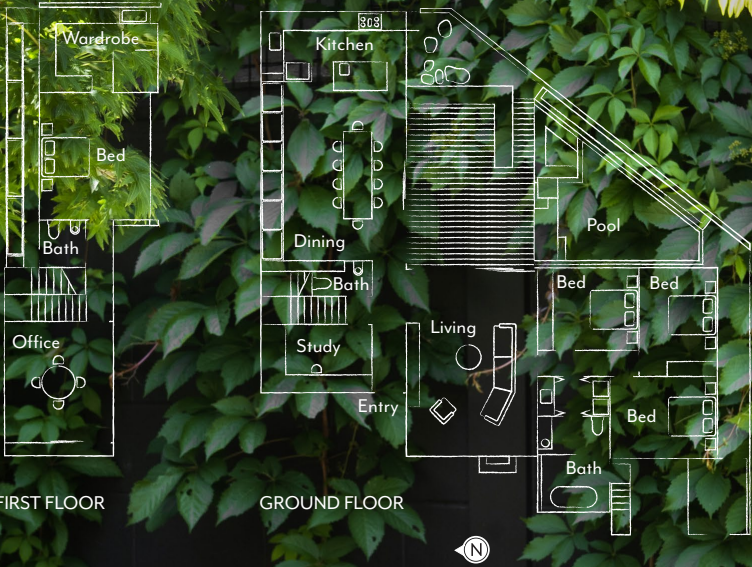
► *Coy Yiontis Architects, Prahran, Victoria; (03) 9510 5700 or www.coyyiontis.com.au.*



Paint colours are reproduced as accurately as printing processes allow.



The layout



The palette

Dulux Antique White USA (interior, throughout)

Taubmans Lime Mist

Bristol Wangaratta

BACK GARDEN Rudy takes advantage of a patch of shade under the feature Japanese maple. Pool by Neptune Pools. Grey ironbark cladding. **FAMILY BATHROOM** The wet zones of this ultra-luxe bathroom can be closed off from the vanity area, allowing the girls to use the bathroom simultaneously. Bath, Kaldewei. Side table, stylist's own. **MAIN BEDROOM** Vintage and modern are combined to beautiful effect. Wall cabinet, Fred International. Vintage bedside table and lamp, Red Rider Vintage. *For Where to Buy, see page 222.* **H&G**